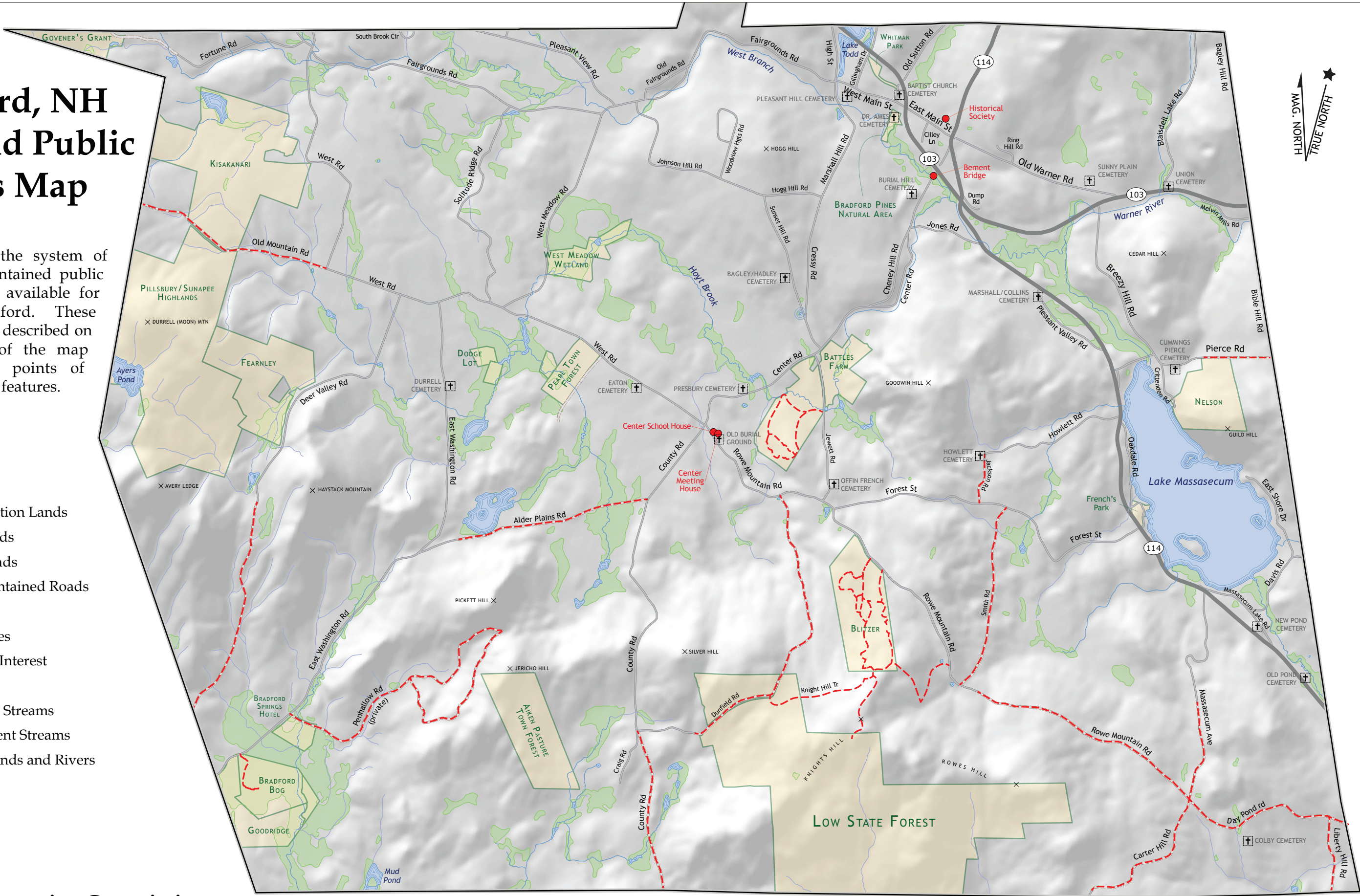


Bradford, NH Trails and Public Lands Map

This map shows the system of trails and non-maintained public and private roads available for recreation in Bradford. These trails and roads are described on the reverse side of the map along with other points of interest and natural features.

Legend

- Conservation Lands
- State Roads
- Local Roads
- Non-maintained Roads
- Trails
- Cemeteries
- Points of Interest
- Summits
- Perennial Streams
- Intermittent Streams
- Lakes, Ponds and Rivers
- Wetlands



Bradford Conservation Commission

NORTHERN GEOMANTICS Design and Cartography by Bill Duffy
bduffy@northgeo.com - May, 2014

0 0.5 1 1.5 2 Miles

Indian Tie-up

Trails and Old Roads

Alder Plains Road. This Class 6 road extends from East Washington Road to County Road. It is often flooded by beaver activity. Heron occasionally nest at the west end at Brown’s Marsh. Alder Plains Marsh on east end is open and grassy with views of Mount Sunapee. Easy hike. County Road to East Washington Road - 1.4 miles

Battles Farm. A loop trail starts and ends at Jewett Road by the bridge over Hoyt Brook. It rises over the top of Jewett Hill and the trail is rough and steep in places. At the west side of the trail (away from Jewett Road) there are two alternative routes to ascend Jewett Hill labeled ‘outer loop’ and ‘inner loop.’ A round trip from the parking area over Jewett Hill is 1.9 miles via the inner loop or 2.2 miles via the outer loop.

Blitzer Easement. Trails here are maintained by the owner. They connect to Rowe Mountain Road and Knight’s Hill Trail. Some are steep with switchbacks. Rowe Mountain Road to Knights Hill Trail – 0.9 miles.

Bradford Bog. A boardwalk passes through a rare Atlantic White Cedar swamp to the quaking bog and viewing platform. A trail guide is available at the trailhead. Easy, level hike, but the boardwalk is slippery when wet. East Washington Road to observation platform - 0.3 miles.

Bradford Pines Natural Area. This is a small State-owned preserve with a stand of very large white pine on the banks of West Branch Brook. There is a short, easy trail from a highway turnout, watch for a small trail sign. Route 103 to large pines - 0.1 miles.

Carter Hill Road. This very steep road runs from the end of Massasecum Ave (at the intersection of Day Pond and Rowe Mountain Roads) to Farrar Marsh State Wildlife Management Area in Hillsborough. There are some eroded sections. On the east side of the road you’ll find the site of the Ward Farm. Day Pond Road to Bradford town line - 1 mile, town line to Farrar Marsh – 1.6 miles.

Day Pond Road. The east end of this road starts at Route 114 and intersects with Massasecum Avenue and Carter Hill Road where its name changes to Rowe Mountain Road. Colby Cemetery and the site of Colby district schoolhouse are on north side of road. Easy hike. Route 114 to Massasecum Avenue and Carter Hill Road - 1.4 miles.

Deer Valley Road. This road was formerly called Nichols Road for the families that farmed here. It continues into East Washington. Easy hike. Bibbo Farm to East Washington/Bradford Road – 1.9 miles

Dunfield Road. The Dunfield Road trail begins 0.3 miles from County Road, just past a one room schoolhouse that was converted to a private residence. It gradually climbs past a series of fields reclaimed by the State for more diverse wildlife habitat. After approximately 0.5 miles, the trail reaches its highpoint. Here, the Knight’s Hill trail (see below) branches east through a recent clear cut. The Dunfield Road trail then turns north and descends past another private residence to the Rowe Mountain Road. Some erosion on the north end and moderately steep areas. Dunfield Rd to Rowe Mountain Road – 1.8 miles.

Knight’s Hill Trail. This trail leaves the Dunfield Road trail, just south of the site of the Knight’s farm cellar hole opposite a field reclaimed for wildlife habitat. The trail passes through a recent clear cut in Low State Forest and climbs, sometimes steeply, across private lands and the south end of the Blitzer Easement before descending to the Rowe Mountain Road. At the height of land along this trail, a spur leads south to the summit of Knight’s Hill. A rocky ledge there has nice views to the south. Both the main trail and the spur are well marked with signs. Rowe Mountain Rd to start of Knights Hill Trail (via Dunfield Road) 1.3 miles. Knights Hill Trail to Rowe Mountain Road - 1.4 miles. The spur to Knight’s Hill summit is 0.6 miles one way.

Liberty Hill Road. This Class 6 unmaintained road is one of the oldest routes to Henniker and there was an early grain mill on west side by a brook. Use this road to access Indian Tie-Up. Easy hike. Day Pond Road to Bradford town line – 0.5 miles, Town Line to Goss Farm, Henniker 2.4 miles.

Old Mountain Road. The old road to Washington, it connects to the Monadnock-Sunapee Greenway and trails leading to Pillsbury State Park, Lovewell Mountain, and the Ayers Pond area. The first 1.5 miles are steep and badly eroded in places. West Road to Bradford town line 1.2 miles; Bradford town line to Monadnock-Sunapee Greenway – 3.0 miles.

Penhallow Road. This is a private road, please respect the owners and park at the Bradford Springs Hotel site. Laid out originally as a subdivision, a sometimes faint trail goes to a ridge with nice view west toward Lovewell Mtn. The west side of the loop is rugged, indistinct and difficult. No motorized traffic is allowed. Round trip loop - 2.9 miles

Pierce Road. Horse and carriage trade used this road as access to Lake Massasecum from Warner. The Mink Hills and Harriman Chandler State Forest are nearby. Moderate hike. Lake Massasecum to Bradford town line - 0.7 miles.

Rowe Mountain Road. This is a pretty woodland walk with some views. There are a few short, wet eroded places. It connects with Day Pond Road at its intersection with Massasecum Ave. and Carter Hill Road. Moderate hike. Smith Road to Day Pond Road – 1.5 miles.

Smith Road. Also known as ‘Goose Street’, it is predominantly downhill from Rowe Mountain Road to Forest Street. Wooded, with several early cellar holes. Rowe Mountain Road to Forest Street – 1.2 miles

Tilly Wheeler Trail and Whitman Park. This is a short trail from Gillingham Drive to Church Street. Once a 1960s style ‘Fitness Trail”, it is an easy walk that follows the old railroad bed. Whitman Park, 1.8 acres, is on the north side of the trail, along Route 103. It was donated in memory of Richard Whitman and is known for its wildflowers and maturing trees. Church Street to Gillingham Drive – 0.3 miles

Public Lands and Conservation Easements

A conservation easement is an agreement between a landowner and a land trust or other qualified organization that permanently protects specified conservation values. It is a legal document permanently attached to the deed, even as the property changes hands over time. Public or private lands without a conservation easement or deed restriction in place may change usage.

Aiken Pasture Town Forest. Named for an early resident who maintained this area as a pasture, it is now a wooded 136 acres protected with a conservation easement. Access is by foot, ski, or snowshoe from the private Penhallow Road. There are no marked trails and it is a steep hike.

Ayers Pond. This secluded 25 acre mountain pond is listed by the State as a public waterway. However, there is no easy access for the public.

Battles Farm Easement. A conservation easement protects 143 acres of important agricultural and forest soils, nearly a mile of Hoyt Brook, valuable wildlife habitat, views, and an important flood control area. See trail information.

Bradford Bog. The New England Wild Flower Society donated the core property to the town in 1971 to protect the rare Atlantic white cedar swamp, quaking bog, and associated plant communities. Combined with the adjacent Goodridge Conservation Area, this property covers approximately 180 acres, protected by easement .

Bradford Pines Natural Area. This state-owned preserve of 2.2 acres protects a small number of gigantic white pines on the West Branch Brook. See trail information.

Dodge Lots. These two landlocked parcels, totaling 15.5 acres, are largely wet and inaccessible.

Fearnley Easement. This 158 acre easement is forest and wetland, including the headwaters of Hoyt Brook. It surrounds pasture and rises up steeply to the highest point in town, Durrell Mountain. There are no formal trails. This property adjoins additional conserved land totaling more than 16,000 acres.

Goodridge Conservation Land. This 72-acre piece was purchased in 2003 with generous cooperation by the former owners to further protect the Bradford Bog and to preserve the largest of the rare Atlantic white cedar. A logging road runs into the property along the western boundary (the Washington town line).

Govener’s Grant Easement. This private easement is approximately 170 acres in total with 30 acres within Bradford. It abuts the Pillsbury/Sunapee Highlands block of forestland.

Kisakanari Easement. This easement consists of 318 acres of forest and wetland surrounding sheep pasture. It also includes a large beaver pond and headwaters of both Hoyt Brook and West Branch Brook. There is a trail maintained by the Lake Sunapee Snowmobile Club. It abuts other conserved land creating wildlife habitat for wide-ranging species.

Low State Forest. This is wooded, high country of 1117 acres in total with 900 acres within Bradford. The state has created several openings to increase diversity of wildlife habitat off the Dunfield Road which runs through it. Motorized vehicles are prohibited.

Nelson Farm Easement. This 89 acre property includes part of Guild Hill, a prominent overlook to Lake Massasecum. There are no marked trails.

Pearl Town Forest. John and Lena Pearl donated this 37 acre parcel to the town in 1980. It is a short walk through maturing woods with wetlands on either side of a small ridge. Parking is possible in dry seasons a short distance along the former Butman Road. Cellar holes of Butman and Jackson farms are at end of the road. An additional 6.5 acres of landlocked wetland has been added to this town-owned property.

Pillsbury/Sunapee Highlands. This easement comprises several thousand acres with 451 in Bradford. It connects Pillsbury and Sunapee State Parks. Public access is allowed and there are some established snowmobile and hiking trails.

West Meadow Wetland Conservation Area. The town’s Wetlands Inventory notes the value of this 42.8 acre property for flood control and wildlife. The best time to explore this wetland is in winter when its views can be appreciated. It was once dammed for Leviston’s mill in the 1800s.

Selected Historic Sites

Village Area

Old Post Office. The first stand-alone post office was built in the early part of the 1900s and was originally located on land leased from the train depot. It now sits by Route 114 and currently houses the Historical Society with a small museum open most Saturdays. Call 938-5372 for information.

Town Hall. The Town Hall was built in 1797 and was originally located at Bradford Center. It was dismantled and enlarged at its current site on West Main Street in 1863. It is included on the National Register of Historic Places.

Baptist Church. This church was built in 1830 and remodeled in 1906. The church clock is owned and maintained by the Town of Bradford.

Bradford Train Depot. The train ran through Bradford from 1850 until the early 1960s. Town business shifted to the north because of the railroad and for a time Bradford was the last stop with a stage coach ferrying tourists to the many summer hotels.

Bement Bridge. The covered bridge was built in 1854 at a cost of \$500 and was extensively rebuilt in 1969. It is on the National Register of Historic Places.

Bradford Center

Originally this was heart of downtown Bradford, and the geographical center.

Center Meeting House. Built in 1838, it is now maintained by the Union Congregational Society. The wall and ceiling stencils have been restored.

Center School House. Built in 1793, there were at one time a dozen one room schools servicing the town. This one was renovated and is now maintained by the Bradford Historical Society.

Town Pound. Built in 1789, delinquent livestock was held here to await retrieval by owners.

Other Points of Interest

French’s Park. The town beach on Lake Massasecum was willed to the town in 1928 by John E. French. A transfer station sticker is required and parking is limited.

Bradford Springs Hotel Site. A hotel was established in the 1840s at what was thought to be a medicinal spring. Many cellar holes mark the site. The small brick wellhead is still visible in the marsh. The renovated springhouse is at the Musterfield Farm in Sutton. The hotel was dismantled and rebuilt in Antrim as the Maplehurst Inn in 1921. This land was donated to the town by Robert Keating, whose family owned the hotel and nearby farm for many years. There is a conservation easement on this 20.3 acre site.

Indian Tie-Up. This is an interesting overhanging rock formation. It is said to have been used for native encampment. Recent logging has obscured the unmarked trail but has made the ledges more visible. Approximately 1 mile from Day Pond Road via Liberty Hill Road.